

INSTALLATION MANUAL

IMP-DUO DUAL PORT INDOOR FIBER OPTIC LED ILLUMINATOR INDOOR RATED



IMPACT[®]
LIGHTING

02/2020

INDEX

Overview..... 1

Installation Step by Step..... 2

Mounting 2

Troubleshooting 3

PRODUCT OVERVIEW

The **IMP-DUO** dual port fiber optic illuminator and direct replacement for EFO series illuminators is available in dual 40 Watt LED. Warm white or cool white options. Indoor rated and UL listed, the IMP-DUO is designed to accept EFO end emitting fiber ports or side emitting fiber heads.

NOTE: EFO Fiber heads not included

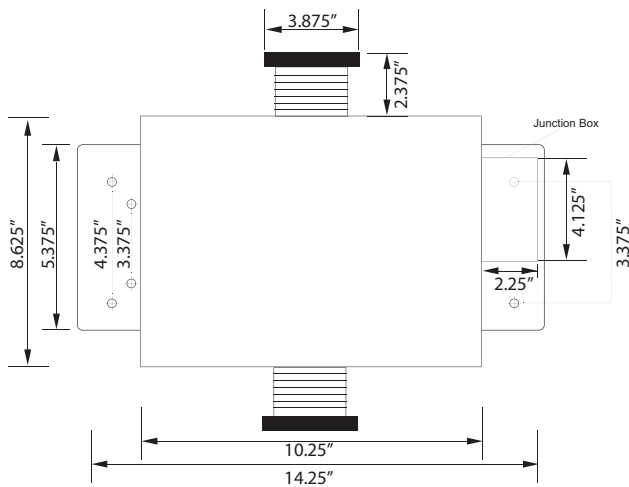


DIRECT REPLACEMENT FOR:

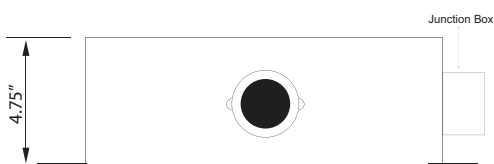
- EFO-700-NC-D
- EFO-800-NC-D
- EFO-1+1
- EFO-2+2
- EFO-3+3
- EFO-4+4
- EFO-44
- EFO-33

SPECIFICATIONS

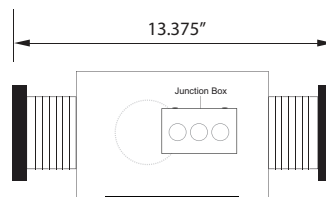
Construction	Anodized aluminum housing
Power	10-240VAC
LEDs	Dual 40W
Lamp Life	50,000 Hours
Dimensions	10.25" x 8.625" x 4.75"
Overall Dimensions	13.25" x 14" x 4.75"
Certifications	UL Listed
IP Rating	Indoor
Weight	9lb/4.08kg
Shipping Weight	12lb/5.44kg



TOP VIEW



FRONT VIEW



SIDE VIEW

DUAL PORT LED FIBER OPTIC LIGHTSOURCE Installation Sheet

THREADED HARNESS



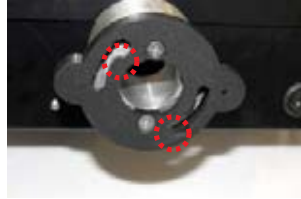
1) Unscrew existing harness



6) Reattach existing fiber port to new unit



2) Open existing housing to remove fiber port



7) Locate slotted holes on new fiber port



3) Remove 2 screws inside unit securing fiber port



8) Align screw heads with slotted holes



4) Re-thread screws into fiber port



9) Twist fiber port counter clockwise until tight

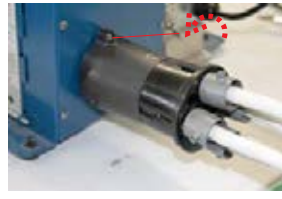


5) Do not tighten all the way. leave approx. 13/16" gap



10) Screw on new fiber harness. (NOTE: It may be necessary to hold part to avoid twisting off)

STANDARD SCREW-IN HARNESS



1) Unscrew existing harness



2) Re-attach fiber harness to new unit

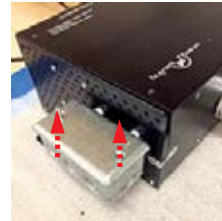


3) Align the two screw holes



4) Screw and tighten with existing screws

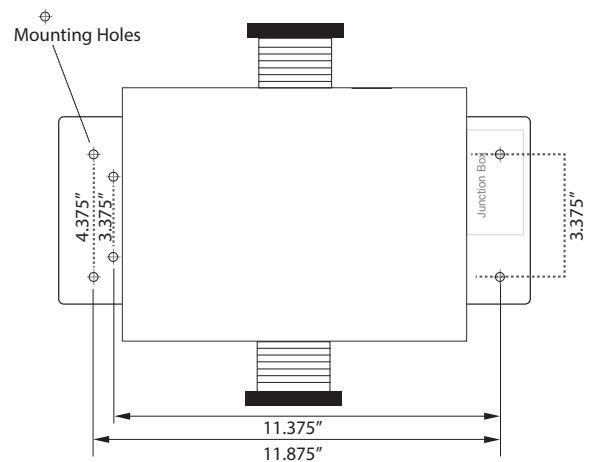
JUNCTION BOX WIRING



120 - 240 VAC

Black = Line White = Neutral Green = Ground

MOUNTING DIAGRAM



TOP VIEW

NOTE: This light source is not serviceable and has no internal serviceable parts. Please contact the manufacturer with service related issues.

▶ **Problem:** Low light levels in fiber

▶ **Possible Cause:** Melted fibers in fiber head are overheating.

▶ **Solution:** Re-cut the fiber head. Loosen the ferrule and push the fibers 1/2” past the fiber head. Follow steps 2-3.

▶ **Problem:** Light source is not turning on

▶ **Possible Cause:** No power or improper wiring

▶ **Solution:** Check that the main power to the unit. If the main power is on and the unit still does not turn on, check to see if there is power at the low voltage side of the power supply. If there is power on the low voltage side of the power supply, check your control system and make sure it is wired properly. *(check wiring diagrams that correspond to your application)*