

XTRU-1889

Linear Series | ARCHITECTURAL LIGHTING

IMPACT
LIGHTING



Impact Lighting's X-TRU-1889 LED Profile is a small durable fixture designed for unique applications with designers and architects in mind.

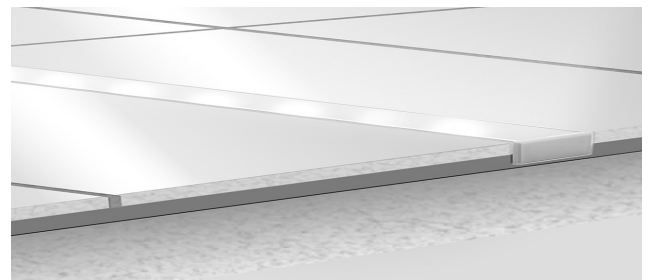
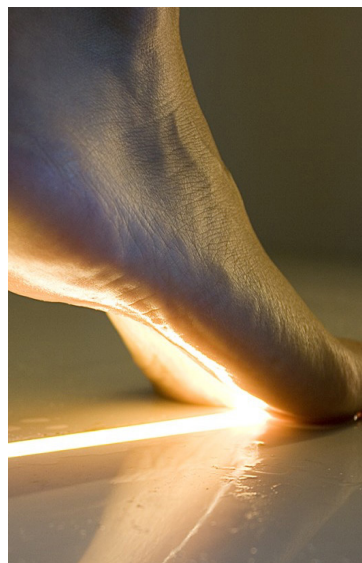
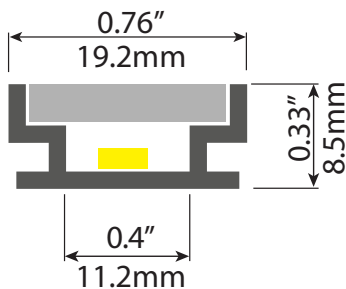
This versatile IP67 profile is suitable for custom recessed installation in walls, floors and ceilings.

This high quality profile offers a unique way to make use of linear low voltage lighting and is the designer's choice for commercial and residential LED strip lighting.

The XTRU1889 mounting channel utilizes LED tape light and is easily placed on horizontal or vertical surfaces allowing you to create your own custom LED low voltage lighting scheme.

XTRU-1889 Linear Series

Aluminum LED lighted profile.



KEY FEATURES:

- Waterproof
- Small and Durable
- Fixed to finished surface with screws or adhesive
- End caps
- Custom cut to length (max 3 meters / 118 inches)

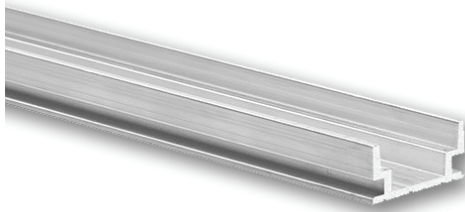
Impact Lighting Inc.

3100 Pennington Road, Orlando, Florida 32804 USA • Phone: 1.800.507.5714 • Email: sales@impact-lighting.com

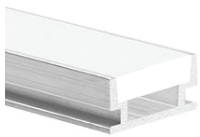
www.impact-lighting.com

PROJECT	DATE
TYPE	QTY.

ARCHITECTURAL LINEAR SERIES



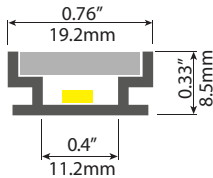
XTRU-1889



XTRU-1889
(with cover)



XTRU-1889
(with cover & endcap)



Actual Size

XTRU-1889 LED Profile is a small durable fixture designed for unique applications with designers and architects in mind.

This versatile IP67* profile is suitable for custom recessed installation in walls, floors and ceilings. This high quality profile offers an unique way to make use of linear low voltage lighting and is the designer's choice for commercial and residential LED strip lighting.

The **XTRU1889** mounting channel utilizes LED tape light and is easily placed on horizontal or vertical surfaces allowing you to create your own custom LED low voltage lighting scheme.

Please Note: These profiles are only compatible with strip light 0.4 inches wide or smaller.

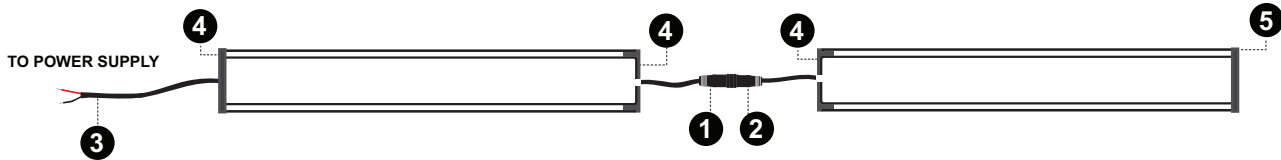
FEATURES

- waterproof
- durable
- compact design
- resistant to standard floor loads
- easy to clean
- environmentally friendly

*IP67 relies on proper sealing on install. Please read installation instructions carefully

- 1 MALE CONNECTOR
- 2 FEMALE CONNECTOR
- 3 NO CONNECTOR

- ENDCAPS**
- 4 Aluminum Endcap w/ Hole
 - 5 Aluminum Endcap Closed



ORDERING Example:
XTRU-1889- 48"- NA - F - CW - R - 48 - C
 XTRU-1889 Profile, 48" Cut Length, Non-Anodized Aluminum Finish, Frosted Cover w/ Cool White LED, Right Facing Lead Wire, 12" Wire Length, Closed End Cap

MODEL	CUT LENGTH	HOUSING FINISH	COVER	LED COLOR	LEAD WIRE LOCATION	LEAD WIRE LENGTH	END CAP
XTRU-1889 Aluminum LED Lighted Profile	Write desired length above	NA - Non-Anodized	F - Frosted	WW - Warm White CW - Cool White NW - Neutral White RGB - Red, Green, Blue	R - Right Facing L - Left Facing B - Left & Right* (daisy chain)	Write Desired Length Above	C - Closed H - Hole

Impact Lighting Inc.