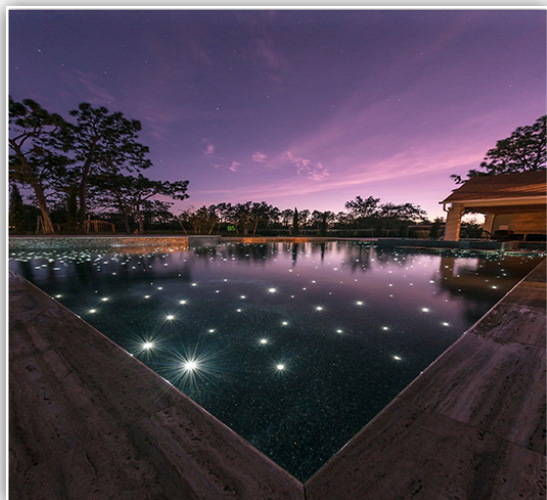
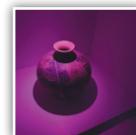
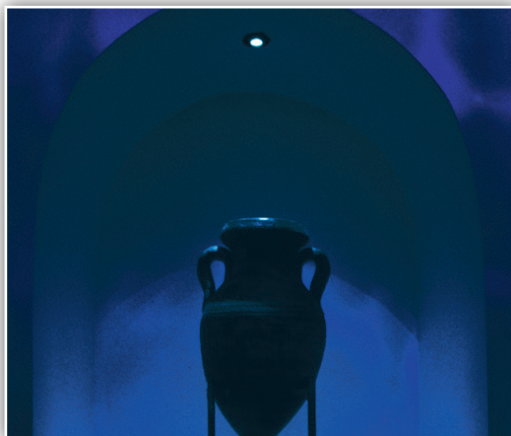




*Ideal for use with architectural lighting fixtures, landscape fixtures, star floors for pools, water-tight lenses and feature lights. Use with decorative Endglow™ fixtures.*



THE ONLY MANUFACTURER OF  
FIBER OPTIC CABLE IN THE U.S.A.

- ▶ Heat Free Illumination
- ▶ Waterproof
- ▶ Flexible
- ▶ Energy Efficient
- ▶ Color Changing Capability
- ▶ Low Maintenance



### ITEM

### DESCRIPTION

### SPOOL SIZE (Sold by the foot)

<b>OP4EG</b>	<p>.125" 3.2mm</p>	<p>OPTI-PURE™ End emitting cable, .125" (3.2mm) in diameter Black jacket with 4 straight .030"(0.75mm) fiber optic strands. Maximum (smallest) Bend Radius = .5" (12.7mm)</p>	<p><u>MINI</u> 1,500' 457M</p>	<p><u>SMALL</u> 3,000' 914M</p>	<p><u>MED</u> 310,500' 3,200M</p>	<p><u>LARGE</u> N/A</p>
<b>OP8EG</b>	<p>.1875" 4.8mm</p>	<p>OPTI-PURE™ End emitting cable, 0.1875" (4.8mm) in diameter White jacket with 8 straight .030" (0.75mm) fiber optic strands. Minimum (smallest) Bend Radius = .5" (12.7mm)</p>	<p><u>MINI</u> 1,200' 366M</p>	<p><u>SMALL</u> 3,300' 1,006M</p>	<p><u>MED</u> 6,500' 1,981M</p>	<p><u>LARGE</u> 8,000' 2,438M</p>
<b>OP12EG</b>	<p>.219" (5.5 mm)</p>	<p>OPTI-PURE™ End emitting cable, .219" (5.5mm) in diameter Black jacket with 12 straight .030" (0.75mm) fiber optic strands. Maximum (smallest) Bend Radius = .5" (12.7mm)</p>	<p><u>MINI</u> 1,000' 305M</p>	<p><u>SMALL</u> 2,500' 762M</p>	<p><u>MED</u> 5,000' 1,524M</p>	<p><u>LARGE</u> 7,000' 2,134M</p>
<b>OP25EG</b>	<p>.25" (6.35 mm)</p>	<p>OPTI-PURE™ End emitting cable, .25" (6.35mm) in diameter Black jacket with 25 straight .030" (0.75 mm) fiber optic strands. Maximum (smallest) Bend Radius = 1" (25.4mm)</p>	<p><u>MINI</u> 500' 152M</p>	<p><u>SMALL</u> 2,220' 610M</p>	<p><u>MED</u> 4,000' 1,219M</p>	<p><u>LARGE</u> 5,500' 1,676M</p>
<b>OP50EG</b>	<p>.312" (7.9 mm)</p>	<p>OPTI-PURE™ End emitting cable, .312" (7.9mm) in diameter Black jacket with 50 straight .030" (0.75 mm) fiber optic strands. Maximum (smallest) Bend Radius = 1" (25.4mm)</p>	<p><u>MINI</u> 350' 107M</p>	<p><u>SMALL</u> 700' 213M</p>	<p><u>MED</u> 2,200' 670M</p>	<p><u>LARGE</u> 2,500' 762M</p>
<b>OP75EG</b>	<p>.375" (9.5 mm)</p>	<p>OPTI-PURE™ End emitting cable, 0.375" (9.54mm) in diameter Black jacket with 75 straight .030" (0.75mm) fiber optic strands. Maximum (smallest) Bend Radius = 1.5" (38.09mm)</p>	<p><u>MINI</u> 200' 61M</p>	<p><u>SMALL</u> 650' 198M</p>	<p><u>MED</u> 1,200' 366M</p>	<p><u>LARGE</u> 1,800' 549M</p>
<b>OP100EGW</b>	<p>.5" (12.5 mm)</p>	<p>OPTI-PURE™ End emitting cable, .50" (12.5mm) in diameter Black jacket with 100 straight .030" (0.75mm) fiber optic strands. Maximum (smallest) Bend Radius = 1.5" (38.09mm)</p>	<p><u>MINI</u> N/A</p>	<p><u>SMALL</u> 250' 76M</p>	<p><u>MED</u> 500' 152M</p>	<p><u>LARGE</u> 750' 229M</p>
<b>OP150EGW</b>	<p>.281" (15.1 mm)</p>	<p>OPTI-PURE™ End emitting cable, 0.2812" (15.1mm) in diameter White jacket with 150 straight .030" (0.75mm) fiber optic strands. Maximum (smallest) Bend Radius = 1.5" (38.09mm)</p>	<p><u>MINI</u> N/A</p>	<p><u>SMALL</u> 250' 76M</p>	<p><u>MED</u> 500' 152M</p>	<p><u>LARGE</u> 750' 229M</p>
<b>OP225EGW</b>	<p>.625" (15.9 mm)</p>	<p>OPTI-PURE™ End emitting cable, 0.625" (15.9mm) in diameter. White jacket with 225 straight .030" (0.75 mm) fiber optic strands. Maximum (smallest) Bend Radius = 2" (50.8mm)</p>	<p><u>MINI</u> N/A</p>	<p><u>SMALL</u> 150' 46M</p>	<p><u>MED</u> 400' 122M</p>	<p><u>LARGE</u> 500' 152M</p>
<b>OP300EGW</b>	<p>.687" (17.5 mm)</p>	<p>OPTI-PURE™ End emitting cable, .687" in diameter White jacket with 300 (17.5mm) straight .030" (0.762 mm) fiber optic strands. Maximum (smallest) Bend Radius = 2" (50.8mm)</p>	<p><u>MINI</u> N/A</p>	<p><u>SMALL</u> 150' 46M</p>	<p><u>MED</u> 250' 76M</p>	<p><u>LARGE</u> 500' 152M</p>

