

TABLE OF CONTENTS

<p>1. SPECIFICATIONS: 1-2</p> <ul style="list-style-type: none"> - Technical Specifications 1 - Physical Specifications 2 <p>2. ORDER LOGIC: 3</p> <p>3. CONNECTORS: 4-7</p> <ul style="list-style-type: none"> - Seamless 4 - Submersible Seamless..... 5 - Snap..... 6 - Barrel 7 	<p>4. MOUNTING HARDWARE: 8-9</p> <ul style="list-style-type: none"> - Standard 8 - Plastic 8 - Spring Clip 9 - Flexible 9 <p>5. PACKAGING: 10</p> <p>6. TESTING: 10-12</p> <ul style="list-style-type: none"> - Photometrics..... 10 - Certifications 11 - Fixture Testing 11 - Charts 12-13
---	--



IMPACT LIGHTING INC.



LIGHT DIMENSION: 0.45" X 1.14in (11.5mm X 29mm)

OUTPUT 270°

LED Light	Epistar or Nichia SMD LED Chip	
Max Run Length		
Single Feed	Seamless: 22.97ft (7m)	Snap: 32.81ft (10m)
Double Feed	Seamless: 45.93ft (14m)	Snap: 65.62ft (20m)
Light Surface	Round profile 270°	
Lumen Maintenance	70,000 Hours L70 @ 25°C : 90,000 L50 @ 25° 50,000 Hours L70 @ 50° : 70,000 Hours L50 @ 50°C	

ELECTRICAL

Input Voltage	24V DC
Power Consumption	3.66W/ft. (12W/m)

PHYSICAL

LED Count	18 LEDs/ft (60LEDs/m)
LED Spacing	0.66in (16.67mm)
Cutting Unit Length	3.94in (100mm) (6 LEDs)
Thermal Management	Cool to the touch, free air convection
Fixture Connections	Front, end & middle lead wires
Minimum Bend Diameter	4.72in (120mm) (Top View Only)

TEMPERATURE RANGES

Installation	32° to 140°F (0° to 60°C)
Operating	-13° to 140°F (-25° to 60°C)
Humidity	0-95% non condensing

DEPENDABILITY

Warranty	Limited 3 Year PVC, Limited 5 Year Silicone
----------	---

SAFETY

Certification	Tested to UL & CSA by Underwriters Laboratory for use in USA and Canada, complies with California Title 24 Requirements, Lighting Facts. Exceeds ANSI C78.377A, CE & RoHS Compliant.
---------------	---

IP RATING	IP68 with appropriately rated accessories
------------------	--



TECHNICAL SPECIFICATIONS

AVAILABLE COLORS:

COLOR	CT WAVELENGTH
Red	620-630nm
Green	520-530nm
Blue	465-475nm
R+G+B (W)	N/A

LUMEN COUNT:

COLOR	PER FOOT	PER METER	POWER
Red	>6.71lm	>22lm	1.37W/ft (4.5W/m)
Green	>27.43lm	>90lm	1.37W/ft (4.5W/m)
Blue	>5.49lm	>18lm	1.37W/ft (4.5W/m)
R+G+B (W)	>39.62lm	>130lm	3.66W/ft (12W/m)

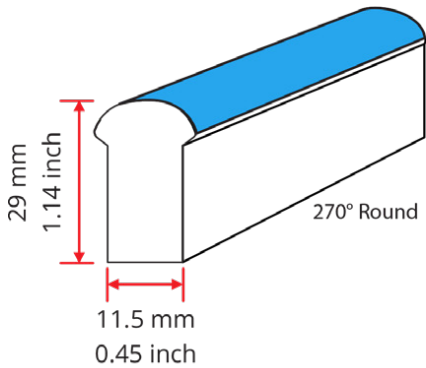
COLOR JACKETS:

For standard or custom color jacket options please contact us. Minimum quantity order of 656ft. (200m) applies.

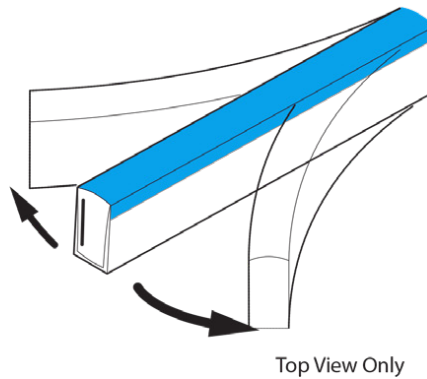
PHYSICAL SPECIFICATIONS



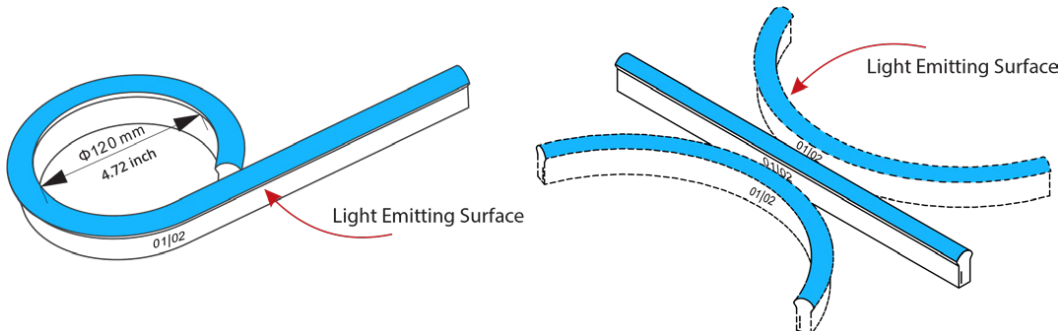
LIGHT PROFILE



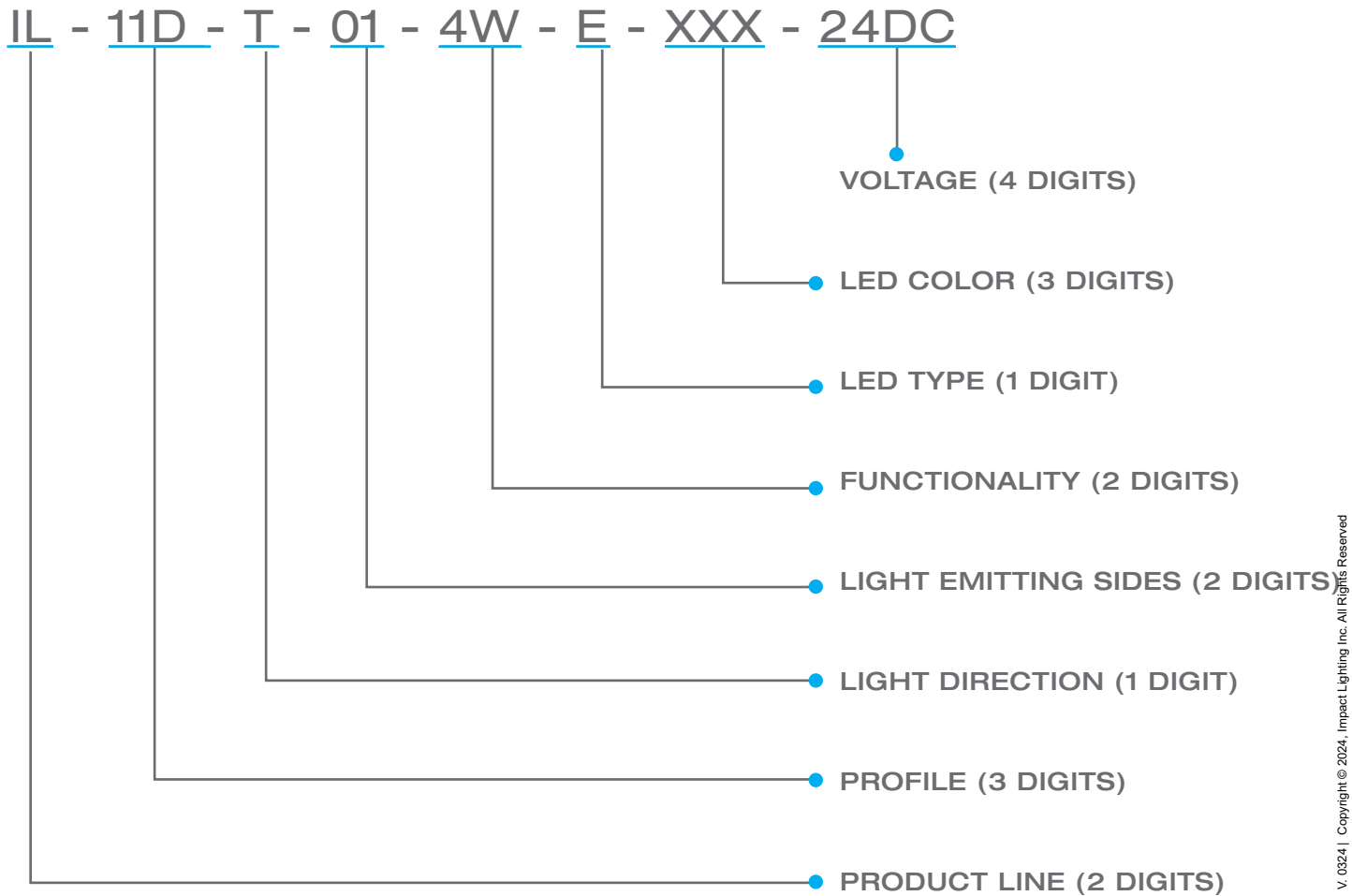
LIGHT DIRECTION



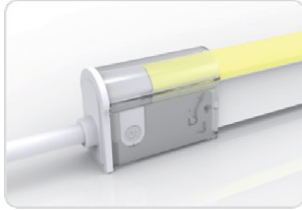
MINIMUM BENDING DIAMETER



ORDERING LOGIC

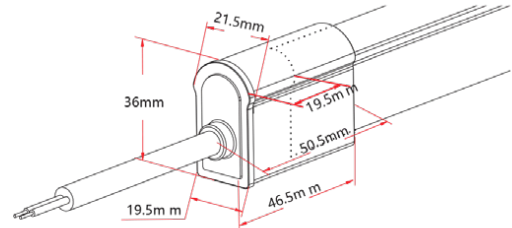


IP67: Rated for wet locations,
not submersion.
Factory Assembly Only.



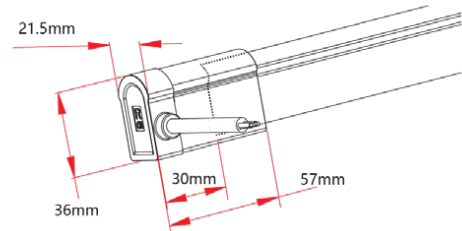
Snap End Exit

IL-11D-T-01-4W-SC-1-EN-XXX-S
IL-11D-T-01-4W-SC-2-EN-XXX-S



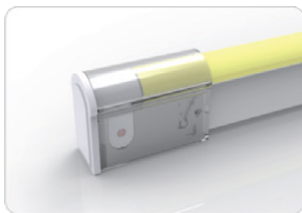
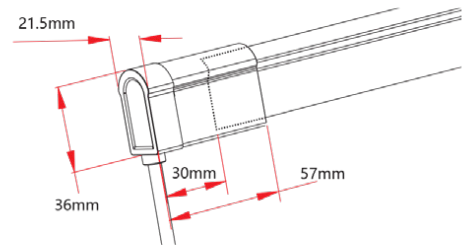
Snap Side Exit

IL-11D-T-01-4W-SC-1-SL-XXX-S
IL-11D-T-01-4W-SC-2-SL-XXX-S
IL-11D-T-01-4W-SC-1-SR-XXX-S
IL-11D-T-01-4W-SC-2-SR-XXX-S



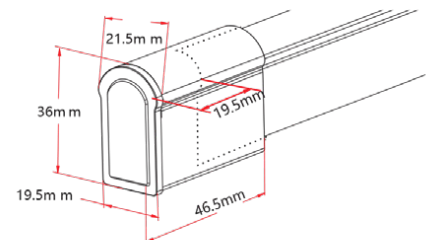
Snap Bottom Exit

IL-11D-T-01-4W-SC-1-BO-XXX-S
IL-11D-T-01-4W-SC-2-BO-XXX-S



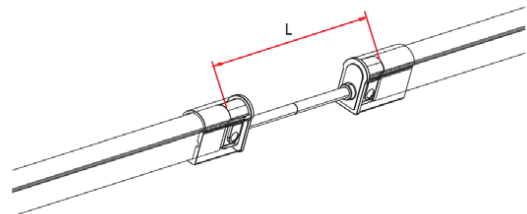
Snap End Cap

IL-11D-T-01-0W-SC-1-EC
IL-11D-T-01-0W-SC-2-EC



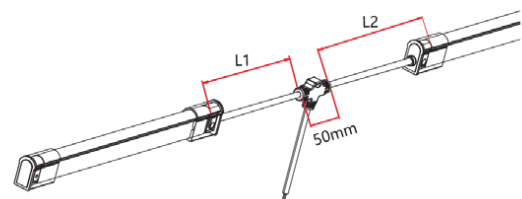
Snap Jumper

IL-11D-T-01-4W-SC-0-EJ-XXX-S



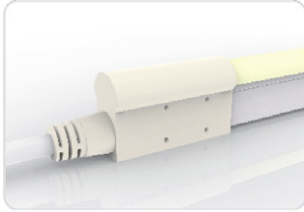
Snap Power T Feed

IL-11D-T-01-4W-SC-0-TF-XXX-S

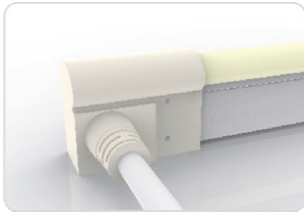
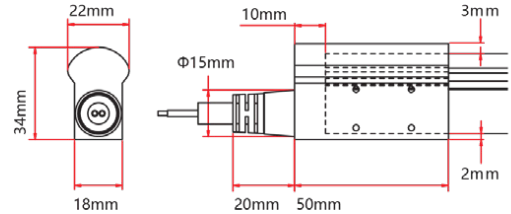


5 SUBMERSIBLE SEAMLESS CONNECTORS

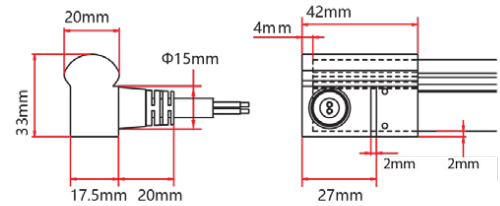
IP68: Submersible. Waiting on 3rd party certification from UL as of 18/04/12. Factory Assembly only.



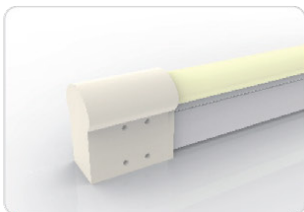
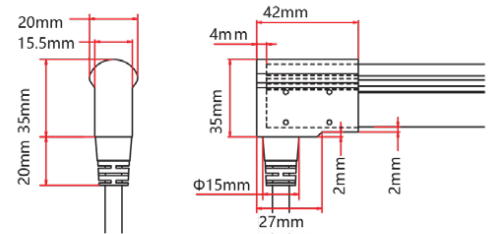
Submersible End Exit
IL-11D-T-01-4W-SU-0-EN-XXX-S



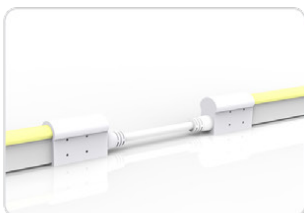
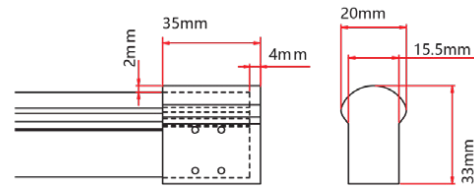
Submersible Side Exit
IL-11D-T-01-4W-SU-1-SR-XXX-S
IL-11D-T-01-4W-SU-2-SL-XXX-S



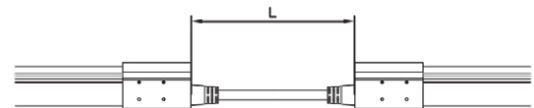
Submersible Bottom Exit
IL-11D-T-01-4W-SU-0-BO-XXX-S



Submersible End Cap
IL-11D-T-01-0W-SU-0-EC



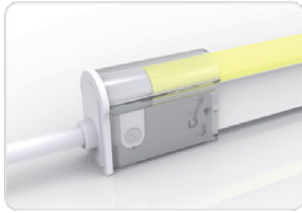
Submersible Jumper
IL-11D-T-01-4W-SU-0-EJ-XXX-S



V. 0324 | Copyright © 2024, Impact Lighting Inc. All Rights Reserved

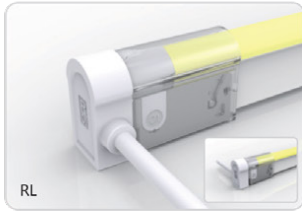
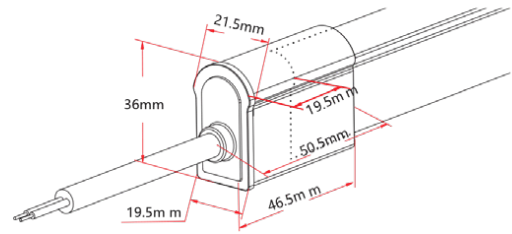


IP67: Rated for outdoor use.
Factory Assembly or DIY.



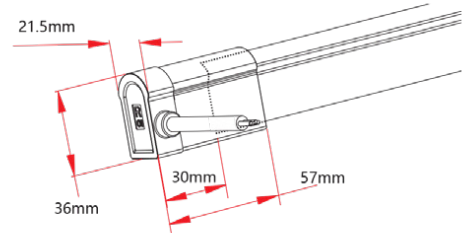
Snap End Exit

IL-11D-T-01-4W-SC-1-EN-XXX-S
IL-11D-T-01-4W-SC-2-EN-XXX-S



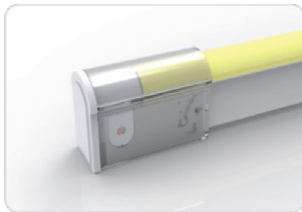
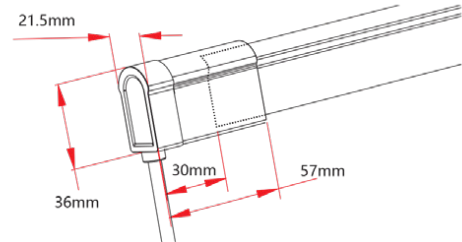
Snap Side Exit

IL-11D-T-01-4W-SC-1-SL-XXX-S
IL-11D-T-01-4W-SC-2-SL-XXX-S
IL-11D-T-01-4W-SC-1-SR-XXX-S
IL-11D-T-01-4W-SC-2-SR-XXX-S



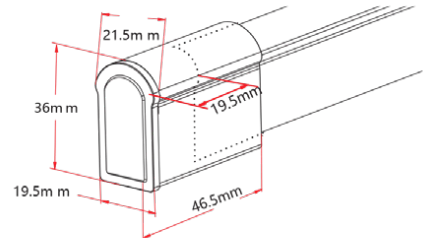
Snap Bottom Exit

IL-11D-T-01-4W-SC-1-BO-XXX-S
IL-11D-T-01-4W-SC-2-BO-XXX-S



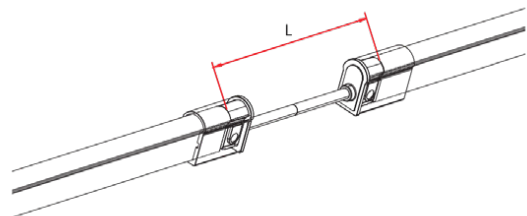
Snap End Cap

IL-11D-T-01-0W-SC-1-EC
IL-11D-T-01-0W-SC-2-EC



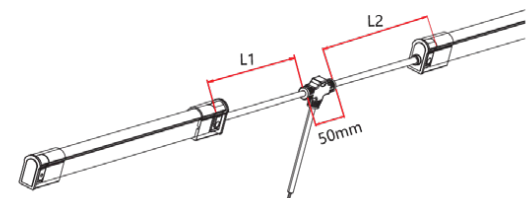
Snap Jumper

IL-11D-T-01-4W-SC-0-EJ-XXX-S



Snap Power T Feed

IL-11D-T-01-4W-SC-0-TF-XXX-S

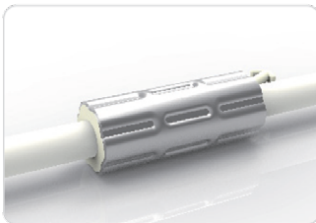
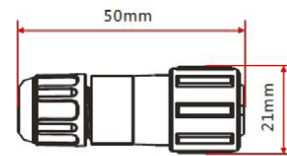


IP20: Rated for indoor use only.
Factory Assembly only.

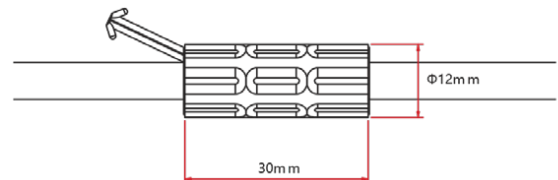


Barrel Connectors

IL-XX-BC-DC-CXX-F
IL-XX-BC-DC-CXX-M
IL-XX-BN-XXA-CXX-F
IL-XX-BN-XXA-CXX-M
IL-XX-PL-XXA-CXX-F
IL-XX-PL-XXA-CXX-M



Anti-Wicking Ferrule



Anvil Cutter

Optional accessory for on-site cutting.

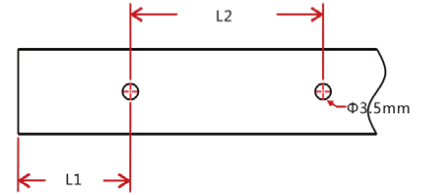
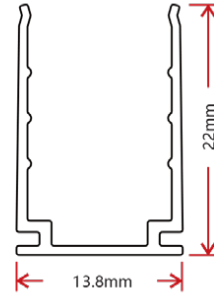
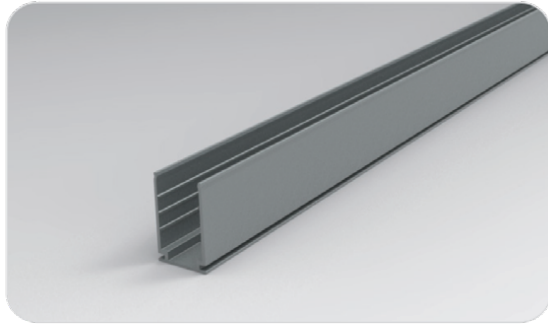
Factory order only



MOUNTING HARDWARE

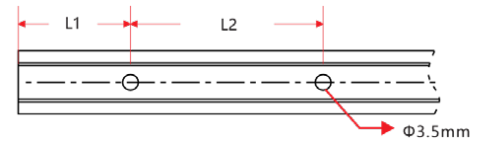
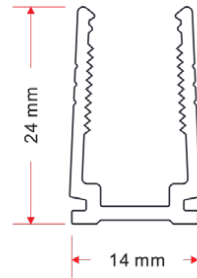
LOCKING ANODIZED ALUMINUM TRACK

STANDARD TRACK



W x H	Standard Length	Part Number	L1	L2	Screw Hole Φ	Hole #
0.54 x 0.87in (13.8 x 22mm)	1.38in (35mm)	TL-11-R-AL-3C5-SD	0.69in (17.5mm)	/	Φ 0.14in (3.5mm)	1
	19.69in (500mm)	TR-11-R-AL-0M5-SD	1.97in (50mm)	7.87in (200mm)	Φ 0.14in (3.5mm)	3
	39.37in (1000mm)	TR-11-R-AL-01M-SD	3.94in (100mm)	7.87in (200mm)	Φ 0.14in (3.5mm)	5
	78.74in (2000mm)	TR-11-R-AL-02M-SD	3.94in (100mm)	7.87in (200mm)	Φ 0.14in (3.5mm)	10

PLASTIC TRACK

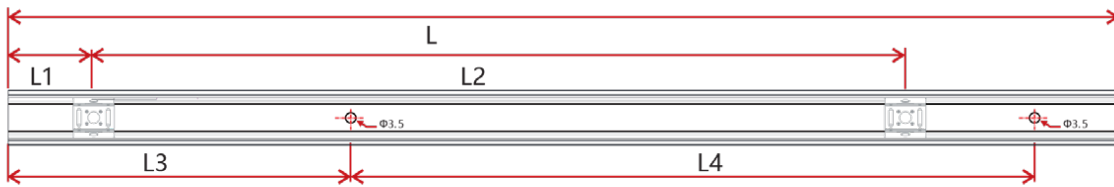
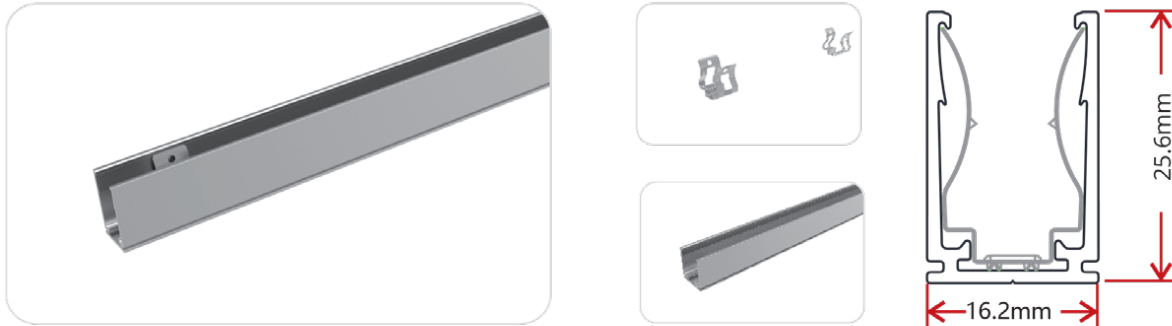


W x H	Standard Length	Part Number	L1	L2	Screw Hole Φ	Hole #
0.55 x 0.94in (14 x 24mm)	19.69in (500mm)	TR-11-R-PL-0M5-SD	1.97in (50mm)	7.87in (200mm)	Φ 0.14in (3.5mm)	3
	39.37in (1000mm)	TR-11-R-PL-01M-SD	3.94in (100mm)	7.87in (200mm)	Φ 0.14in (3.5mm)	5
	78.74in (2000mm)	TR-11-R-PL-02M-SD	3.94in (100mm)	7.87in (200mm)	Φ 0.14in (3.5mm)	10



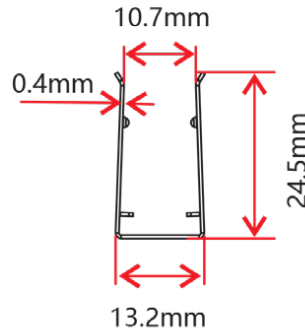
MOUNTING HARDWARE

SPRING CLIP ANODIZED ALUMINUM TRACK

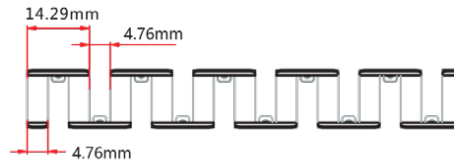
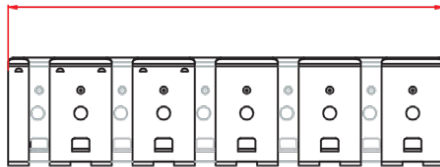


W x H	Standard Length	Part Number	L1	L2	L3	L4	Screw Hole Ø	Hole #	Clip #
0.64 x 1.01in (16.2 x 25.6mm)	1.38in (35mm)	TL-11-R-AL-3C5-SP	0.69in (17.5mm)	/	0.2in (5mm)	0.98in (25mm)	Ø0.14in (3.5mm)	2	1
	19.69in (500mm)	TR-11-R-AL-0M5-SP	0.98in (25mm)	8.86in (225mm)	1.97in (50mm)	7.87in (200mm)	Ø0.14in (3.5mm)	3	3
	39.37in (1000mm)	TR-11-R-AL-01M-SP	0.98in (25mm)	9.35in (237.5mm)	3.94in (100mm)	7.87in (200mm)	Ø0.14in (3.5mm)	5	5
	78.74in (2000mm)	TR-11-R-AL-02M-SP	0.98in (25mm)	9.6in (243.8mm)	3.94in (100mm)	7.87in (200mm)	Ø0.14in (3.5mm)	10	9

STAINLESS STEEL FLEXIBLE CHANNEL



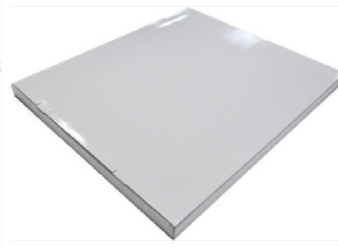
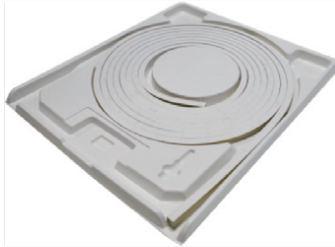
100/300/500/900mm



W x H	Standard Length	Part Number
0.52 x 0.97in (13.2 x 24.5mm)	3.94in (100mm)	TR-11-F-SS-0M1-SD
	11.81in (300mm)	TR-11-F-SS-0M3-SD
	19.69in (500mm)	TR-11-F-SS-0M5-SD
	35.43in (900mm)	TR-11-F-SS-0M9-SD

This profile can be mounted using screws in any gaps where the channel bends.





White Box

Packing Box

Fixture Length	White Box Dimensions	Packing Box Dimensions	# Of White Boxes	Package Weight
196.85in (5m)	15.35x2.05x19.67in (39x5.2x50cm)	20.47x16.14x11.02in (52x41x28cm)	5	30.86lbs (14kg)
393.7in (10m)	20.08x2.05x24.41in (51x5.2x62cm)	25.2x20.87x11.02in (64x53x28cm)	5	57.32lbs (26kg)
393.7in (10m)	20.08x2.05x24.41in (51x5.2x62cm)	25.2x20.87x6.9in (64x53x17.5cm)	3	35.27lbs (16kg)
787.4in (20m)	26.77x2.05x31.1in (68x5.2x79cm)	31.9x27.56x4.92in (81x70x12.5cm)	2	48.5lbs (22kg)

TESTING

Photometric Data

RGB		
LED Type	SMD	
Beam Angle	320°	
Color	Wavelength	Lumen/m
Red	620-630nm	>22lm
Green	520-530nm	>90lm
Blue	465-475nm	>18lm
R+G+B (white)	N/A	>130lm



CERTIFICATIONS

	Testing Organization	Certificate Serial N°	Report Reference
UL 2108	UL	20160726-E360029	E360029-2013
CE-EMC	SGS	SZEM1702001259LMV	SZEM160600421302

FIXTURE TESTING

OPTICAL TESTING

Spectrum Analysis	IES LM 79 (Lumen, CCT, CRI, XY, SDCM, wavelength)
Photometric Distribution	IES LM 73 (lumen intensity distribution & Lux diagram)
Lumen Maintenance & Lifetime	IES LM84 & IES TM28

TEMPERATURE TESTING

Normal Temperature Test	UL1598& UL2388 & IEC60598-1 & IEC60598-2-21
Abnormal Operation Test	UL1598 & UL2388 & IEC60598-1 & IEC60598-2-21

DURABILITY TESTING

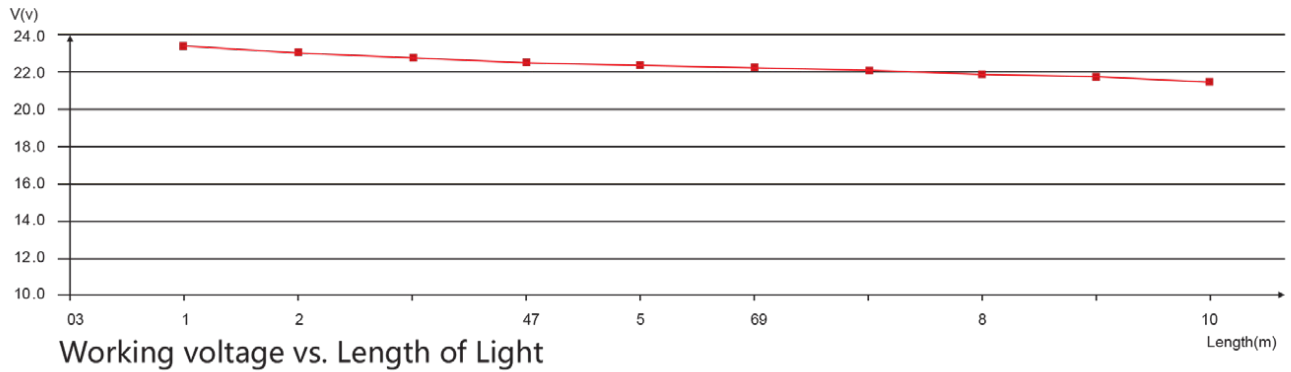
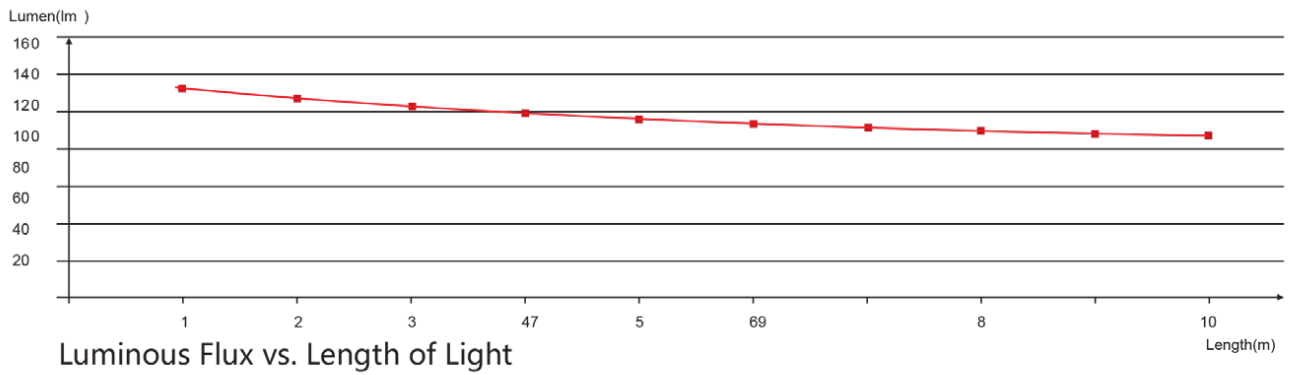
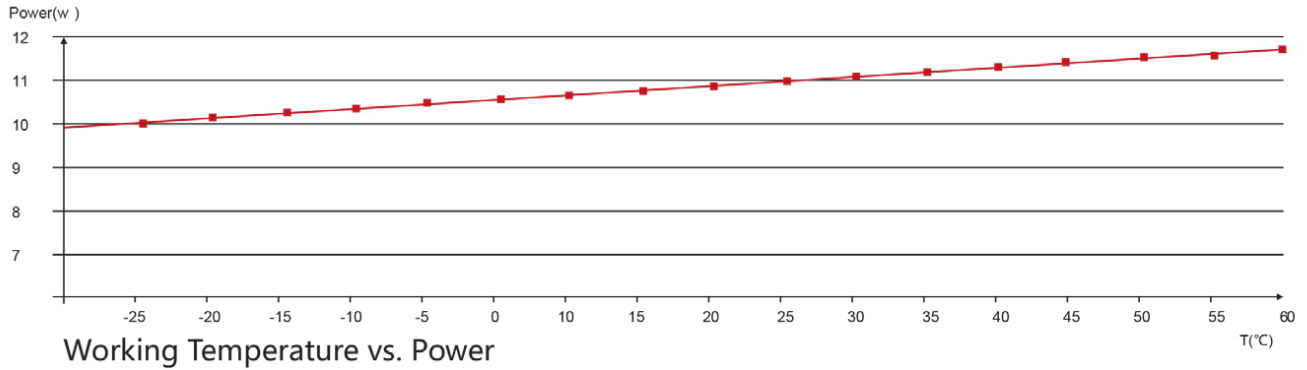
Bending Test	Manufacturer-defined, 500 cycles
Swing Test	UL2388, >750 cycles
Tensile Test	Manufacturer-defined, > the weight of light in max. connection length double feed
Twist Test	Max connection length double feed Manufacturer-defined, >200 cycles
Ball Impact	UL1598 & UL2388 & IEC60598-1 & IEC60598-2-21
IK07 IK08	IEC62262

ENVIRONMENTAL TESTING

Chlorinated Water Immersion	BG9667, PH6.8-7.6, free chlorine 0.3-0.6mg/L
Salt Water Immersion	IEC60598-1, Salinity 4%
Salt Spray Test	IEC68-2-11
Outdoor Exposure	Manufacturer-defined
Flame Resistance	UL94
UV Exposure	ASTMG 154, ISO 4892-3, UVA@340nm
IPX5 IPX6 IPX7 IPX8	IEC60529
Temperature Shock	Manufacturer-defined, -40°C-60°C (typical temperature range)
Constant Temperature	Manufacturer-defined



CHARTS



V. 0324 | Copyright © 2024, Impact Lighting Inc. All Rights Reserved



CHARTS

ANSI STANDARD

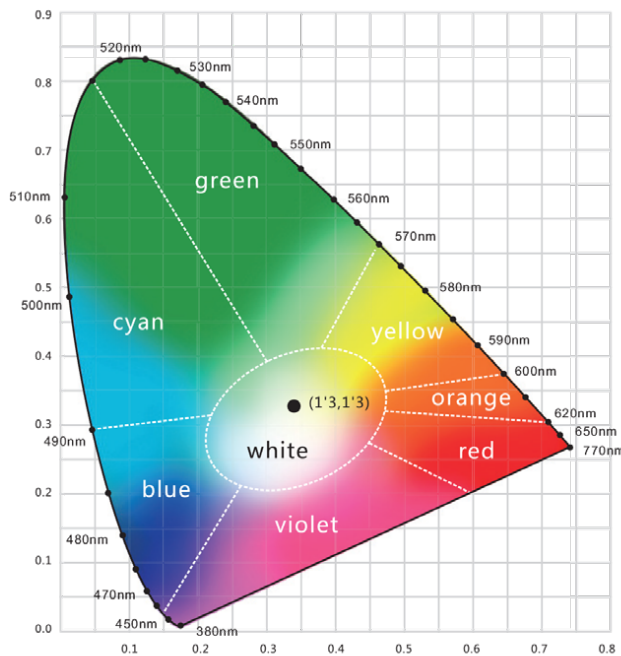
Nominal CCT Categories

Nominal CCT	Target CCT and tolerance(K)	Target D_{uv}	D_{uv} Tolerance Range
2200K	2238 ±102	0.0000	T_x :CCT of the source
2500K	2460±120	0.0000	For $T_x < 2870K$
2700K	2725 ±145	0.0000	0.000±0.0060
3000K	3045±175	0.0001	For $T_x \geq 2870K$
3500K	3465±245	0.0005	$D_{uv}(T_x) \pm 0.0060$
4000K	3985±275	0.0010	where
4500K	4503±243	0.0015	$D_{uv}(T_x) = 57700 \times (1/T_x)^2$
5000K	5029±283	0.0020	-44.6 x (1/ T_x)
5700K	5667±355	0.0025	+0.00854
6500K	6532±510	0.0031	

Flexible CCT (2200-6500K)	$T_F^{1)} \pm \Delta T^{2)}$	$D_{uv} T_F^{3)}$
---------------------------	------------------------------	-------------------

Remark:

- T_F is chosen to be at 100K steps (2300,2400,.....,6400K),excluding the ten nominal CCTs listed in Table 1.
- $\Delta T = 1.1900 \times 10^5 \times T^3 - 1.5434 \times 10^4 \times T^2 + 0.7168 \times T - 902.55$
- Same as in the D_{uv} Tolerance Range.



Light Color



LOADING CHART

Rated Power	35W	60W	75W	80W	100W	120W	150W	185W	240W	320W
2.19W/ft (7.2W/m)	9.84ft (3m)	19.69ft (6m)	24.61ft (7.5m)	26.25ft (8m)	32.81ft (10m)	39.37ft (12m)	49.21ft (15m)	59.06ft (18m)	78.74ft (24m)	98.43ft (30m)
3.66W/ft (12W/m)	6.56ft (2m)	11.48ft (3.5m)	14.76ft (4.5m)	16.4ft (5m)	19.69ft (6m)	22.97ft (7m)	32.81ft (10m)	39.37ft (12m)	45.93ft (14m)	65.62ft (20m)
Lead Type	Single Feed				Double Feed					

Note: These are the max recommended run lengths based on power supply

For example: It is recommended to use one 80W power supply for a single-fed run of 26.25ft (8m) at 2.19W/ft (7.2W/m), or for a single-fed run of 16.4ft (5m) at 3.66W/ft (12W/m).

