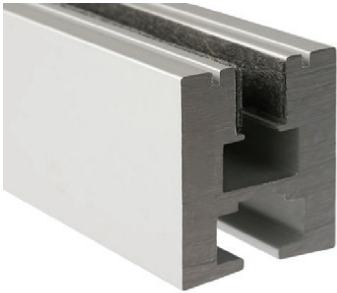


PROJECT	DATE
TYPE	QTY.

ALUMINUM MOUNTING CHANNEL



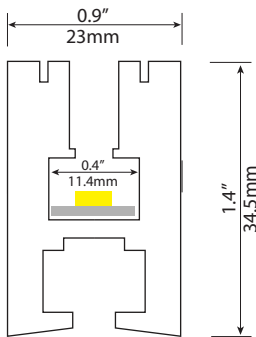
XTRU-1890

Impact Lighting's **XTRU-1890** is a versatile high quality mounting channel for various custom LED strip lighting applications such as signage, glass or acrylic edge lighting.

Using flexible or hard led strips this channel is constructed to hold 2" materials such as glass, acrylic for sign boards, directional signage, maps, etc.

The **XTRU1890** mounting channel utilizes LED tape light and is easily placed on horizontal or vertical surfaces allowing you to create your own custom LED low voltage lighting scheme.

Please Note: These profiles are only compatible with strip light 0.4 inches wide or smaller.

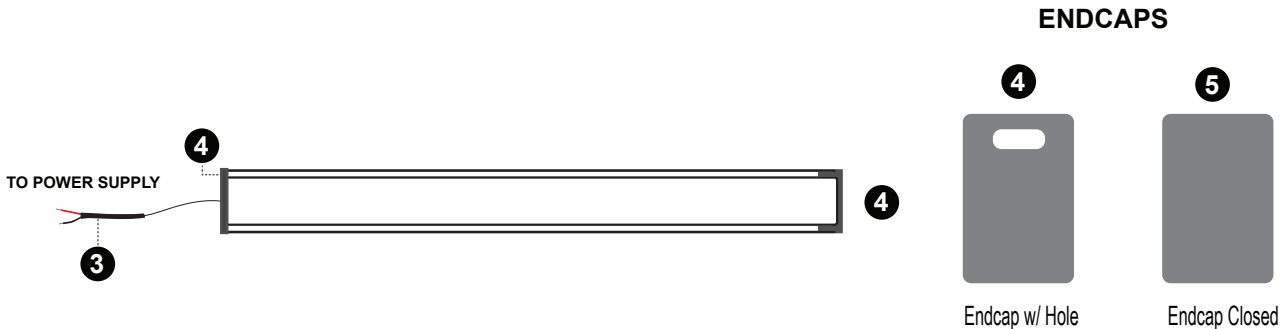


Actual Size



MOUNTING

- Glass: stretching screws
- Surface: metric thread screws & screw anchors
- Endcaps: Plastic and stainless steel available



V. 0324 | Copyright © 2024, Impact Lighting Inc. All Rights Reserved

ORDERING | *Example:* **XTRU-1890-48"-NA-CW-R-48-C-AA**
 XTRU-1890 Profile, 48" Cut Length, Non-Anodized Aluminum Finish, Cool White LED, 12" Wire Length, 8 Hole End Caps, 2 Closed, Stainless Steel

MODEL	CUT LENGTH	HOUSING FINISH	LED COLOR	LEAD WIRE LENGTH	END CAP TYPE & Qty.	END CAP MATERIAL
XTRU-1890 Aluminum LED Lighted Profile	Write desired length above (1-2m standard 2-6m, special order)	NA -Non-Anodized	WW - Warm White CW - Cool White NW - Neutral White RGB - Red, Green, Blue RGBX - Red, Green, Blue + White	Write Desired Length Above	C - Closed number H - Hole of endcaps	P - Plastic SS - Stainless Steel

