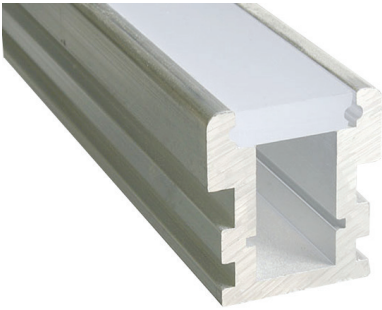


PROJECT	DATE
TYPE	QTY.

XTRU-3579

ALUMINUM IN-GROUND MOUNTING CHANNEL



XTRU-3579



Impact Lighting's **XTRU-3579** has a high integrity and high load bearing capacity. This extrusion is ideal for high-traffic areas such as driveways, sidewalks and bike paths.

Please note: These profiles are only compatible with strip light 0.48 inches wide or smaller.

FEATURES:

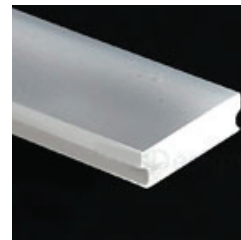
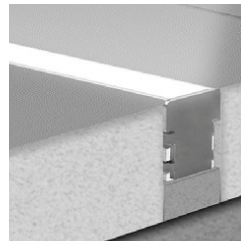
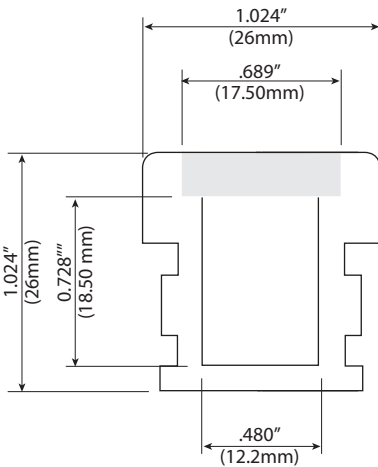
- Designed to obtain an IP67 waterproof rating
- IK10 degree for protection against mechanical impact and pressure.
- Resistant to pedestrian and road traffic

ASSEMBLY

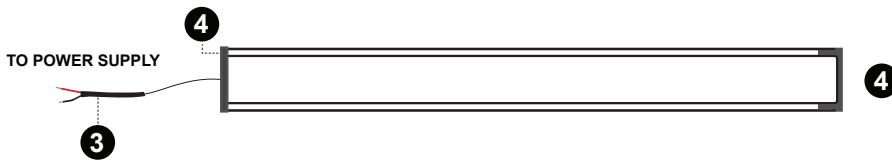
- Mounted on spacer foam in a prepared gap in the hardened surface (e.g. paving stones) the remaining gap is filled with sand

COVERS:

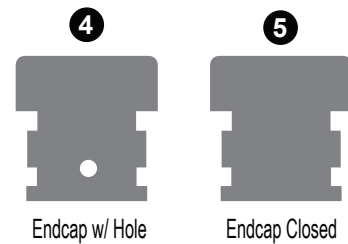
- Frosted
- Black Opal



FROSTED COVER



ENDCAPS



ORDERING

Example:

XTRU-3579-48"-NA-CW-R-48-C-AA

XTRU-3579 Profile, 48" Cut Length, Non-Anodized Aluminum Finish, Frosted Cover, Cool White LED, Right Facing, 4" Wire Length, 8 Hole End Caps, 2 Closed, Stainless Steel

MODEL	CUT LENGTH	HOUSING FINISH	COVER	LED COLOR	LEAD WIRE LOCATION	LEAD WIRE LENGTH	END CAP	QTY.	END CAP MATERIAL
XTRU-4023									
Non-Anodized Aluminum Channel for Driveway, Pavement, or Floor Applications	Write desired length above 39.4" 78.75" 118.11" (standard lengths)	NA - Non-Anodized BA - Black Anodized	F - Frosted BO - Black Opal	WW - Warm White CW - Cool White NW - Neutral White RGB - Red, Green, Blue RGBX - Red, Green, Blue + White	R - Right Facing L - Left Facing B - Left & Right* (daisy chain)	Write Desired Length Above	C - Closed H - Hole	Number of Endcaps	P - Plastic SS - Stainless Steel

