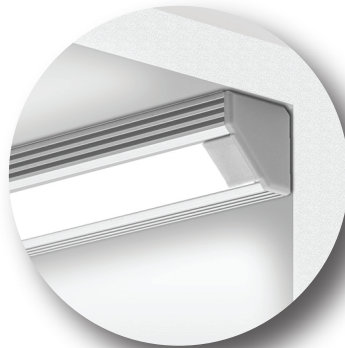


PROJECT	DATE
TYPE	QTY.

ALUMINUM MOUNTING CHANNEL



XTRU-4023



Impact Lighting's XTRU-4023 is a versatile high quality mounting channel for surface mounting or recessed installation. These high quality profiles provide a unique way to make use of linear low voltage lighting and are the designer's choice for creating light fixtures for commercial and residential LED strip lighting.

Please note: These profiles are only compatible with strip light 0.4 inches wide or smaller.

STANDARD LENGTHS:

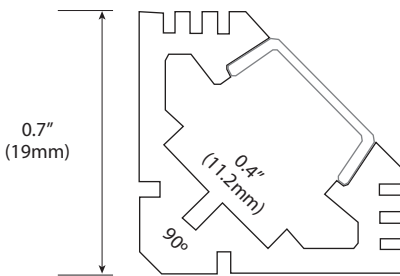
- 3.28ft. (1M)
- 6.56ft. (2M)
- 6.56ft. - 19.658 ft. (2-6M) special order

MOUNTING

- Zinc Mounting Brackets
- Endcaps: PVC

COVERS:

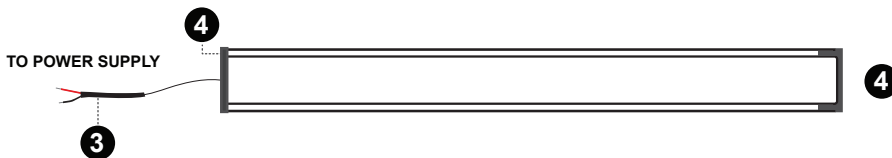
- Frosted
- Black Opal



Non-Anodized



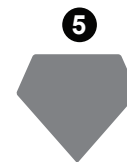
Black-Anodized



ENDCAPS



Endcap w/ Hole



Endcap Closed

ORDERING

Example:

XTRU-4023-48"-NA-CW-R-48-C-AA

XTRU-1890 Profile, 48" Cut Length, Non-Anodized Aluminum Finish, Frosted Cover, Cool White LED, Right Facing, 4" Wire Length, 8 Hole End Caps, 2 Closed, Stainless Steel

MODEL	CUT LENGTH	HOUSING FINISH	COVER	LED COLOR	LEAD WIRE LOCATION	LEAD WIRE LENGTH	END CAP	QTY.	END CAP MATERIAL
XTRU-4023									
Aluminum LED Lighted Profile	Write desired length above (2-6m, special order)	NA - Non-Anodized BA - Black Anodized	F - Frosted BO - Black Opal	WW - Warm White CW - Cool White NW - Neutral White RGB - Red, Green, Blue RGBX - Red, Green, Blue + White	R - Right Facing L - Left Facing B - Left & Right* (daisy chain)	Write Desired Length Above	C - Closed H - Hole	Number of Endcaps	P - Plastic SS - Stainless Steel

