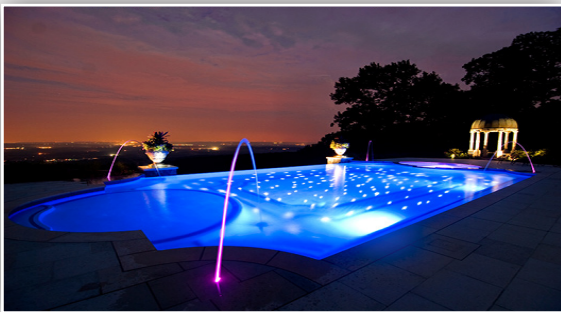




Impact Lighting's fiber optic technology creates the illusion of stars in the bottom of your pool at night creating what we like to call a universe effect. Controlled remotely, thousands of glowing fiber points pierce the water with optional color-changing and twinkling lighting systems. Custom patterns, random stars or constellations are available. Fiber optic technology makes anything possible.

THE UNIVERSE AT THE BOTTOM OF YOUR POOL



EACH STAR KIT COMES WITH:

- ▶ LED Fiber Optic Illuminator
- ▶ Fiber Optic End-Glow Cable
- ▶ Fiber Star Floor Pad

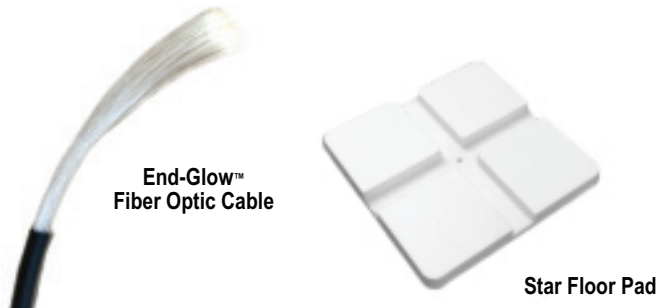
IMPACT LIGHTING



| | |
|---------|------|
| PROJECT | DATE |
| TYPE | QTY |

STAR FLOOR POOL KITS

ILLUMINATOR, ENDPOINT FIBER, STAR FLOOR PAD



DESCRIPTION:

Our star floor pool kit materials use PMMA plastic and optical fiber that are very durable and can withstand the chemicals and cleaning equipment of residential and commercial pools.

KIT INCLUDES:

- LED Fiber Optic Illuminator
- Fiber Optic End-Glow Cable
- Fiber Star Floor Pad

ILLUMINATOR:

ION-8000 series led fiber optic light source is an 80 watt, 24VDC multi-controllable and configurable outdoor UL Listed fiber optic illuminator. It can be configured with white light or rgb+w leds with a *stand-alone program, dmx, rs232 serial or rf. Led options include rgb+w, cool white & warm white. Discreet colors upon special order. *(cool white is recommended for star floor pools)*

END-GLOW™ CABLE:

Opti-Pure™ end emitting .75mm strands of PMMA acrylic jacketed fiber is a flexible heat free illumination solution for energy efficient , low maintenance star floor pool lighting with color changing capability. (25 or 50 strand cable size recommended)

FIBER STAR FLOOR PAD:

Comes in 1.5" or 2" square pads .1/4" thick. 1-3 fiber capacity (depending on desired effect)

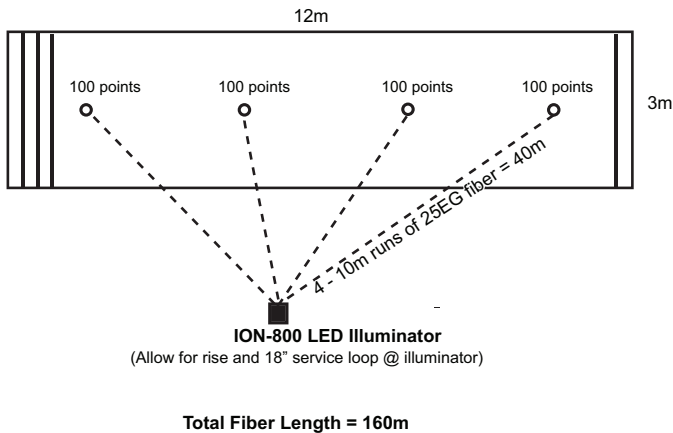
HELPFUL HINTS:

When calculating the length of fiber needed for your star floor pool take into account where your illuminator will be placed, the vertical landscape topography, pool depth and add 18" for a service loop.

Note: You will need at least 3" of fiber to extend above the plaster from the star floor pads. Also take your pattern into consideration as well .

SEE INSTALLATION REFERENCE IMAGES ON THE FOLLOWING SHEETS

Sample Pool Configuration



ORDERING

| MODEL | CABLE LENGTH | # STAR PADS | LED COLOR (COOL WHITE RECOMMENDED) |
|--------|--------------|-------------|---------------------------------------|
| IL-SFP | - | - | - |

ATTACHING A COPY OF YOUR POOL PLANS
AND/OR IMAGES ARE VERY HELPFUL WHEN
GETTING QUOTES FOR STAR FLOOR POOLS

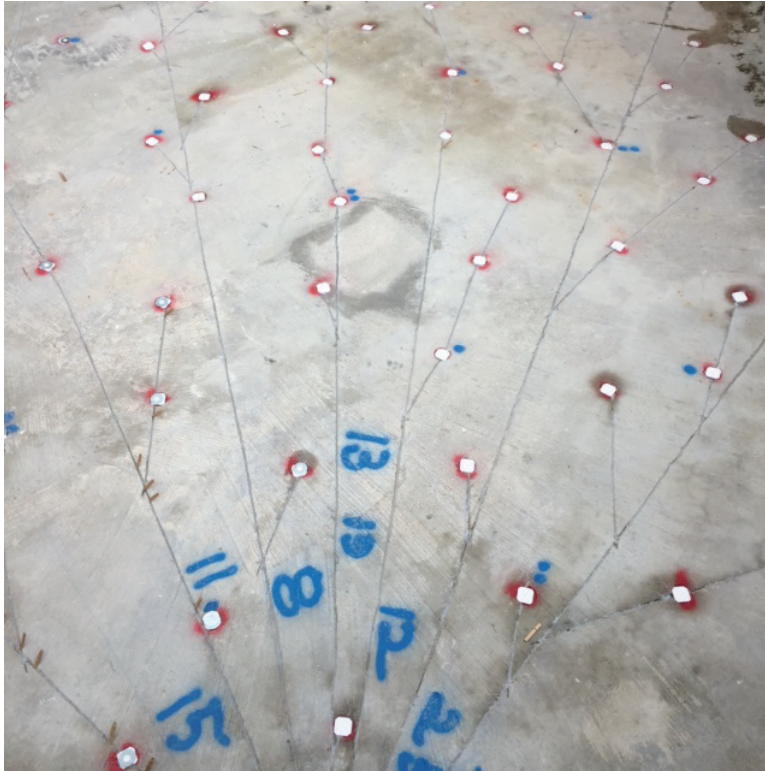


| | |
|---------|------|
| PROJECT | DATE |
| TYPE | QTY |

STAR FLOOR POOL KITS

INSTALLATION REFERENCE

Channels must be cut in concrete for recessing all fibers in pools and spas.
Star pads do not need to be recessed UNLESS tile is being used, but is preferred for the smoothest outcome.



FIBER OPTIC BRANCH LAYOUT



RECESSED SINGLE FIBER STAR PAD AND FILLED FIBER CHANNELS
READY FOR TILE OR PLASTER APPLICATION.



SINGLE FIBER
RECESSED STAR PAD SHOWN



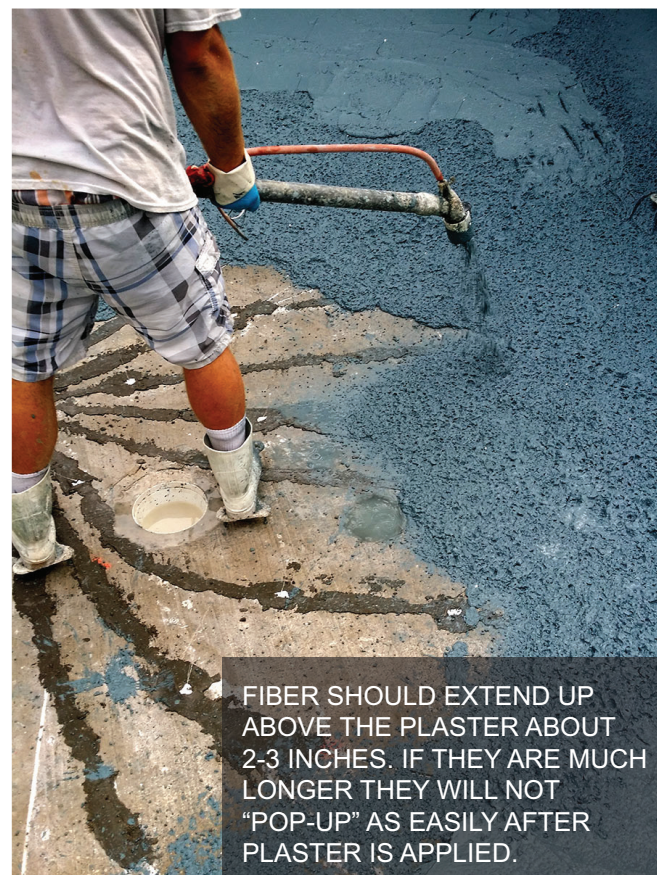
DOUBLE OR TRIPLE FIBERS WILL FIT
INTO STAR PAD OPENING TO CREATE A
LARGER STAR EFFECT



| | |
|---------|------|
| PROJECT | DATE |
| TYPE | QTY |

STAR FLOOR POOL KITS

INSTALLATION REFERENCE



FIBER SHOULD EXTEND UP ABOVE THE PLASTER ABOUT 2-3 INCHES. IF THEY ARE MUCH LONGER THEY WILL NOT "POP-UP" AS EASILY AFTER PLASTER IS APPLIED.

